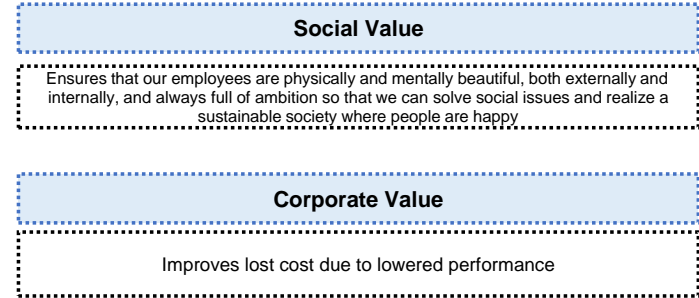
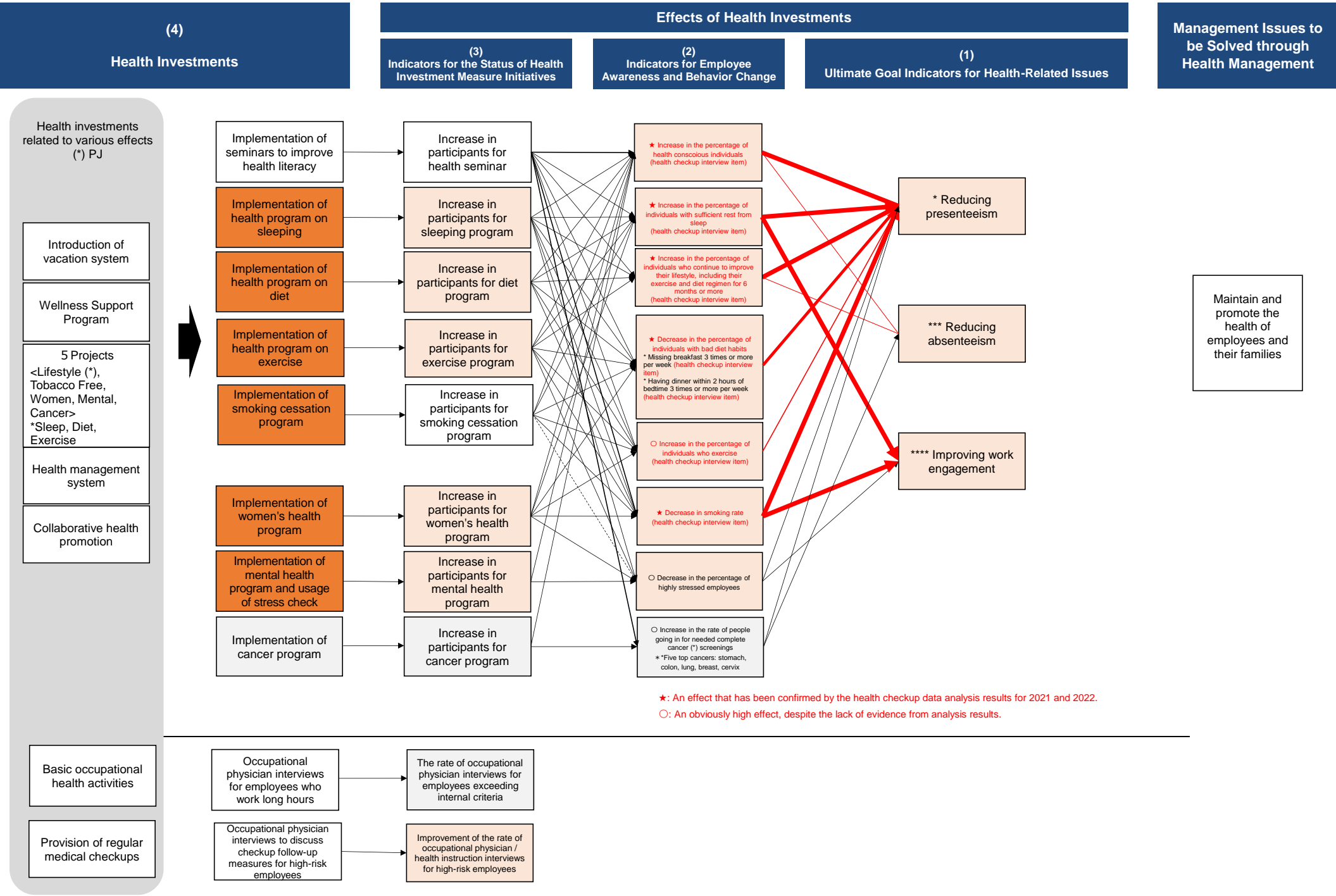


[Strategy Map]

We recognize that the same one will be used for approx. 3 to 5 years. (Because one of the core targets to disclose this map is an investor.)



(*) Generally, "health investments" and "indicators for the status of health investment measure initiatives" correspond one on one. However, the health investments that correspond to more than one indicator for the status of health investment measure initiatives are defined as "health investments related to various effects."

